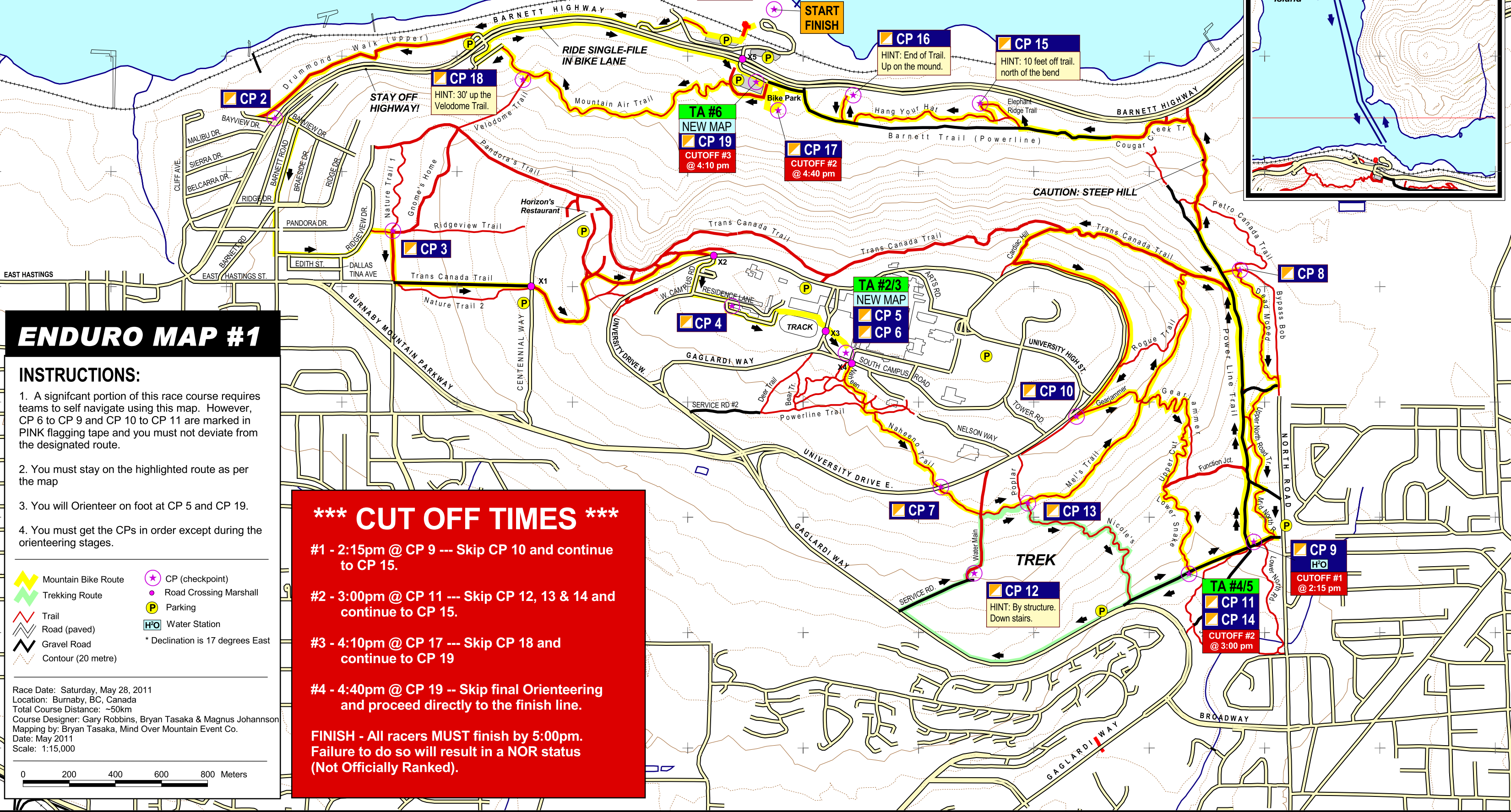
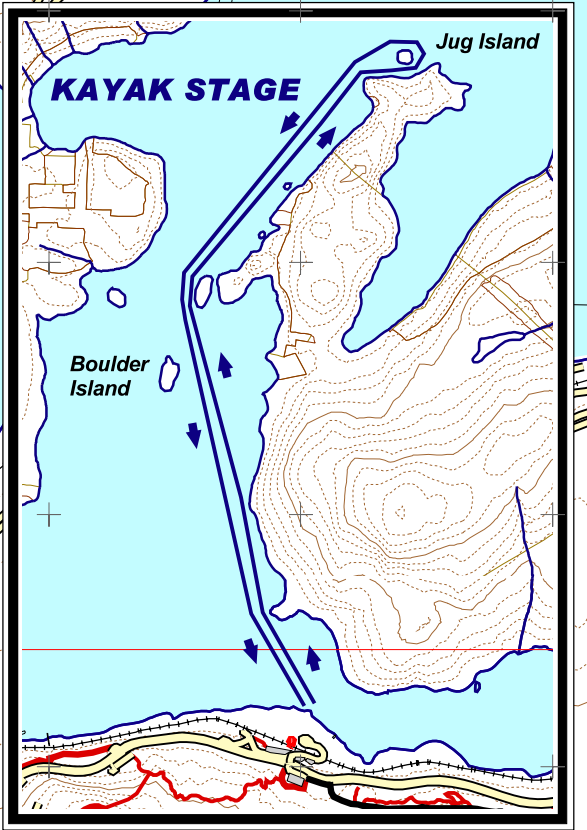


SEE INSET MAP FOR
KAYAK ROUTE



ENDURO MAP #1

INSTRUCTIONS:

1. A significant portion of this race course requires teams to self navigate using this map. However, CP 6 to CP 9 and CP 10 to CP 11 are marked in PINK flagging tape and you must not deviate from the designated route.
2. You must stay on the highlighted route as per the map
3. You will Orienteer on foot at CP 5 and CP 19.
4. You must get the CPs in order except during the orienteering stages.

- Mountain Bike Route
- Trekking Route
- Trail
- Road (paved)
- Gravel Road
- Contour (20 metre)
- CP (checkpoint)
- Road Crossing Marshall
- Parking
- Water Station
- * Declination is 17 degrees East

Race Date: Saturday, May 28, 2011
 Location: Burnaby, BC, Canada
 Total Course Distance: ~50km
 Course Designer: Gary Robbins, Bryan Tasaka & Magnus Johansson
 Mapping by: Bryan Tasaka, Mind Over Mountain Event Co.
 Date: May 2011
 Scale: 1:15,000



***** CUT OFF TIMES *****

#1 - 2:15pm @ CP 9 --- Skip CP 10 and continue to CP 15.

#2 - 3:00pm @ CP 11 --- Skip CP 12, 13 & 14 and continue to CP 15.

#3 - 4:10pm @ CP 17 --- Skip CP 18 and continue to CP 19

#4 - 4:40pm @ CP 19 -- Skip final Orienteering and proceed directly to the finish line.

FINISH - All racers MUST finish by 5:00pm. Failure to do so will result in a NOR status (Not Officially Ranked).